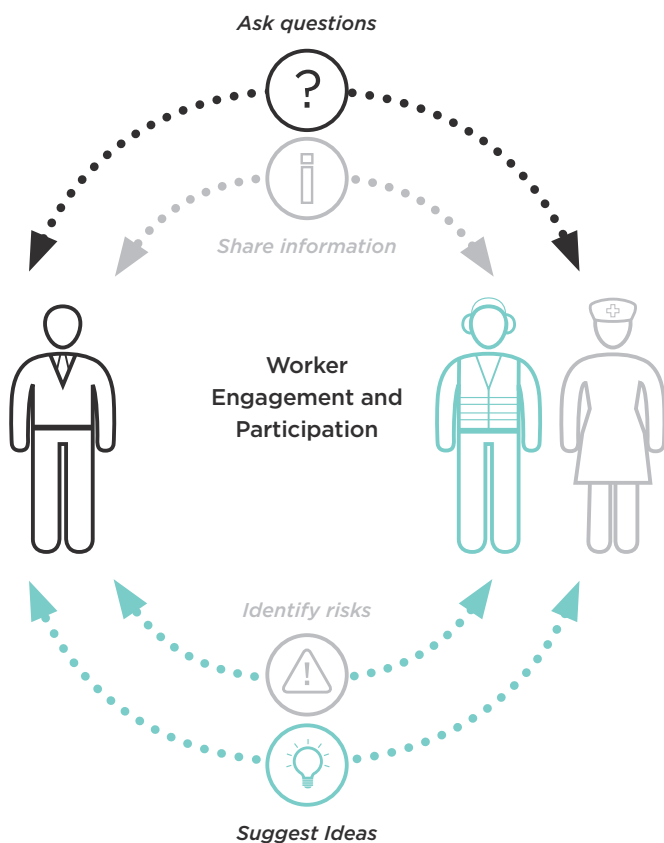


## Appendix 4: Worker engagement, participation and representation Part 3 of HSWA

### Engage with workers and enable their participation

A PCBU has two main duties related to worker engagement and participation:

- to engage with workers on health and safety matters that affect or are likely to affect workers, so far as is reasonably practicable, and
- to have practices that give workers reasonable opportunities to participate effectively in the ongoing improvement of work health and safety.



A PCBU can engage with workers by:

- sharing information about health and safety matters so that workers are well-informed, know what is going on and can contribute to decision-making
- giving workers reasonable opportunities to have a say about health and safety matters
- listening to and considering what workers have to say at each step of the risk management process
- considering workers' views when health and safety decisions are being made
- updating workers about what decisions have been made.

A PCBU must engage with workers during specified times, including when identifying hazards and assessing risks.

A PCBU must have clear, effective, and ongoing ways for workers to suggest improvements or raise concerns.

## Worker representation

Workers can be represented by a Health and Safety Representative (HSR), a union representing workers, or a person that workers authorise to represent them (for example, a community or church leader, or another trusted member of the community).

HSRs and Health and Safety Committees (HSCs) are two well-established methods of participation and representation. If workers are represented by an HSR, worker engagement must also involve that representative.

For more information

### **WORKSAFE GUIDANCE**

#### **Good practice guidelines**

[Worker engagement, participation and representation](#)

#### **Interpretive guidelines**

[Worker representation through Health and Safety Representatives and Health and Safety Committees](#)

#### **Pamphlets**

[Worker representation](#)

[Health and Safety Committees](#)

[Health and Safety Representatives](#)